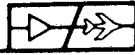


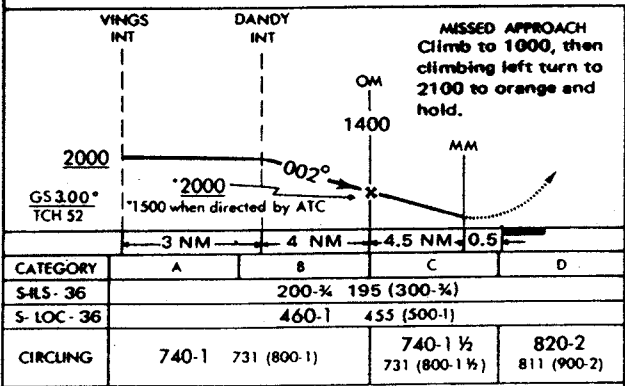
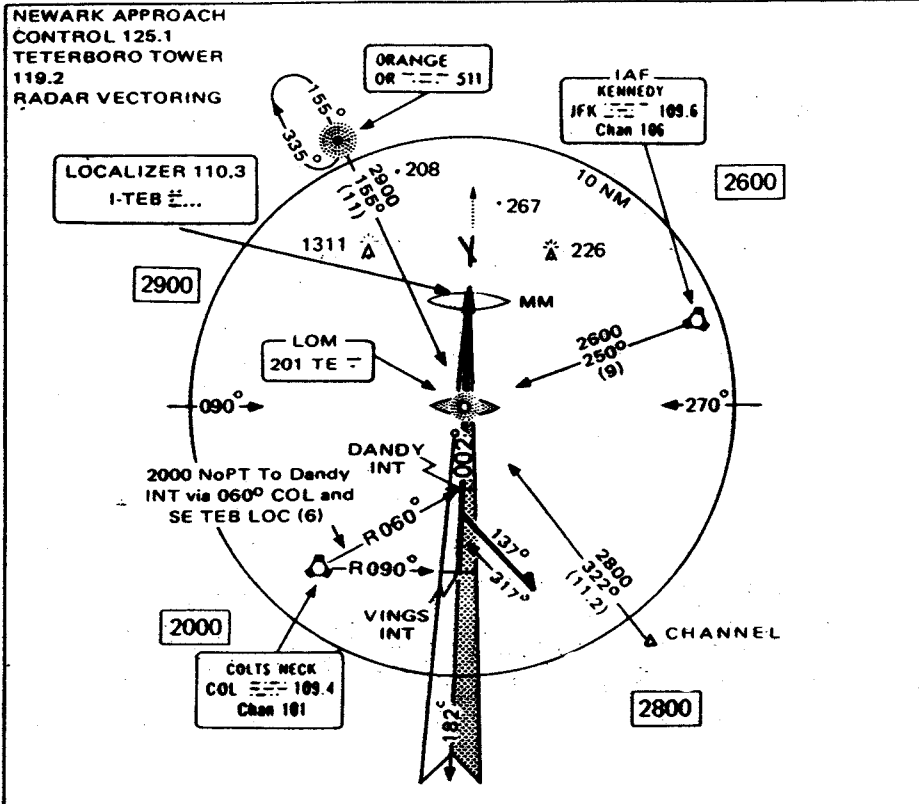
**A.I**



**ILS RWY 36**

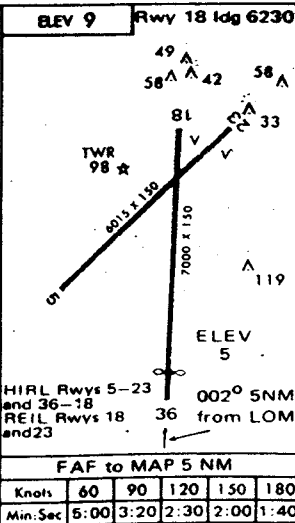
0510 N110.3 C119.2

TETERBORO  
TETERBORO, NEW JERSEY



GS 300° TCH 52	2000	2000	002°	1400	MM
	3 NM	4 NM	4.5 NM	0.5	
CATEGORY	A	B	C	D	
S-RLS-36	200-¾ 195 (300-¾)				
S-LOC-36	460-1 455 (500-1)				
CIRCLING	740-1	731 (800-1)	740-1 ½ 731 (800-1 ½)	820-2 811 (900-2)	

**CAUTION**  
Charts and Approach Plates supplied with the ATC Flight Simulator have been modified, including frequency changes, for instructional purposes. These charts cannot be used for actual navigation.



**ILS RWY 36**

TETERBORO, NEW JERSEY  
TETERBORO